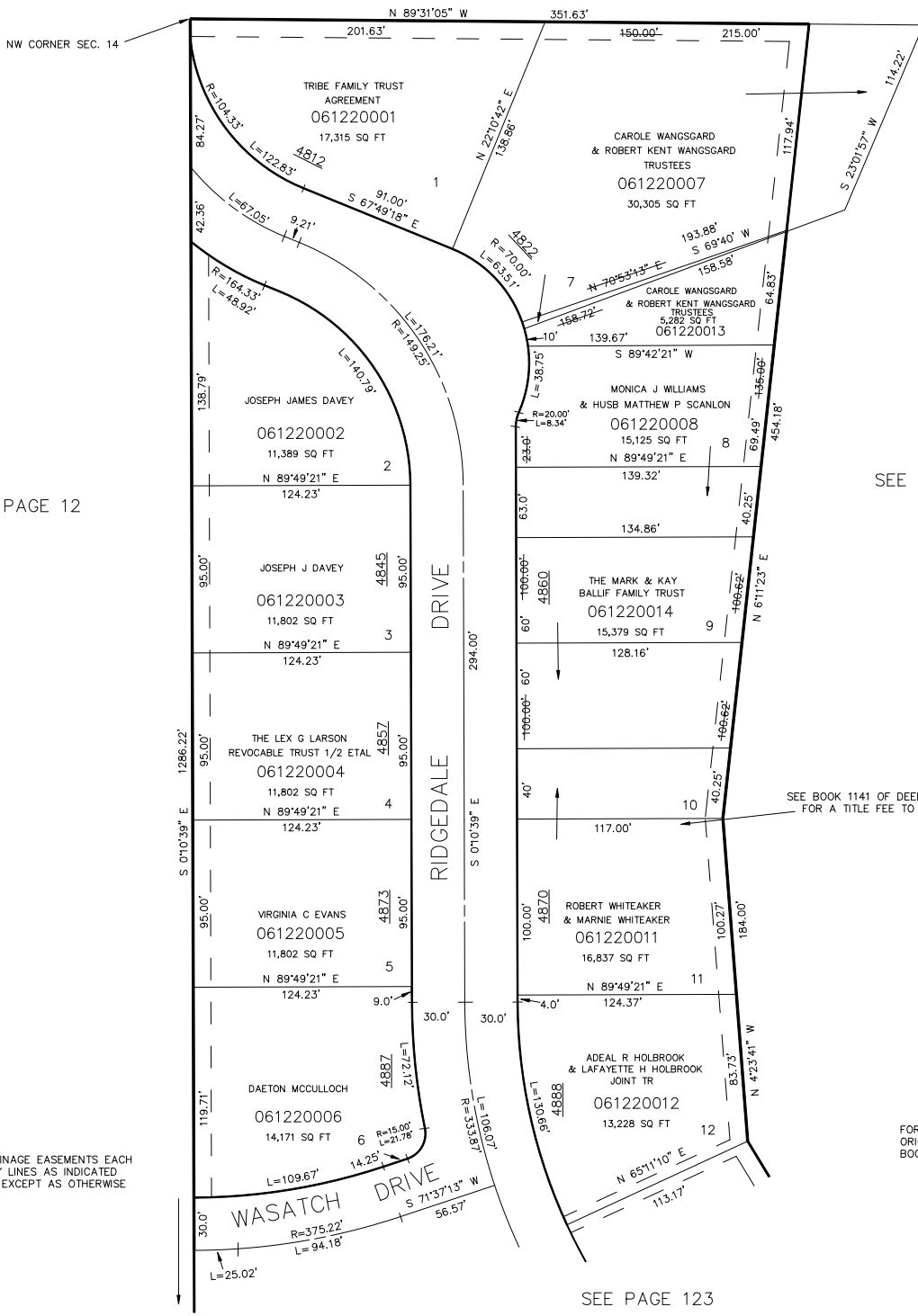


PART OF THE NW 1/4 SEC. 14, T.5N., R.1W., S.L.B. & M.
KNOLLWOOD ESTATES-PLAT 1
LOTS 1-12

TAXING UNIT: 25

IN OGDEN CITY SCALE 1"=50'

SEE PAGE 120



SEE BOOK 7, PAGE 12

SEE PAGE 121-2

SEE BOOK 1141 OF DEEDS, PAGE 651 FOR A TITLE FEE TO EASEMENT

10' UTILITY & DRAINAGE EASEMENTS EACH SIDE OF PROPERTY LINES AS INDICATED BY DASHED LINES EXCEPT AS OTHERWISE SHOWN.

FOR COMPLETE ENG DATA SEE ORIGINAL DEDICATION PLAT IN BOOK 15, PAGE 10 OF RECORDS.

SEE PAGE 123

KST 9-90